

EMPIRE CLUB DEVELOPMENTS

HILLMAN TOWN HOUSE SITE – 5298 ALTA LAKE ROAD

DEVELOPMENT PERMIT SUBMISSION (DP001902)

DRAWING LIST

C-1	SERVICING PLAN
C-2	PROFILE - ROAD A
C-3	PROFILE - ROAD B
C-4 TO C-6	TYPICAL SECTIONS
C-7	GRADING PLAN
C-8	STORMWATER MANAGEMENT PLAN

NOTE:

IN ADDITION TO THE ABOVE DRAWINGS, REFER TO APPLICABLE RESORT MUNICIPALITY OF WHISTLER STANDARD DRAWINGS AND MASTER MUNICIPAL STANDARD DRAWINGS.

DEVELOPER

Empire Club/JV Fivestone Capital
Suite 401, 37989 Cleveland Ave
Squamish, B.C.
V8B 0C1

Phone: 604-898-1901
Fax: 604-898-1903

Contact: Caroline Lamont

CONSULTANT

InterCAD Services Ltd.
1111 West 8th Avenue
Vancouver, B.C.
V6H 1C5

Phone: 604-739-7707
Fax: 604-739-7727

Contact: Iain Lowe, P.Eng

ARCHITECT

Murdoch + Company
106-4319 Main Street
Whistler, B.C.
V8E 1B1

Phone: 604-905-6992
Fax: 604-905-6993

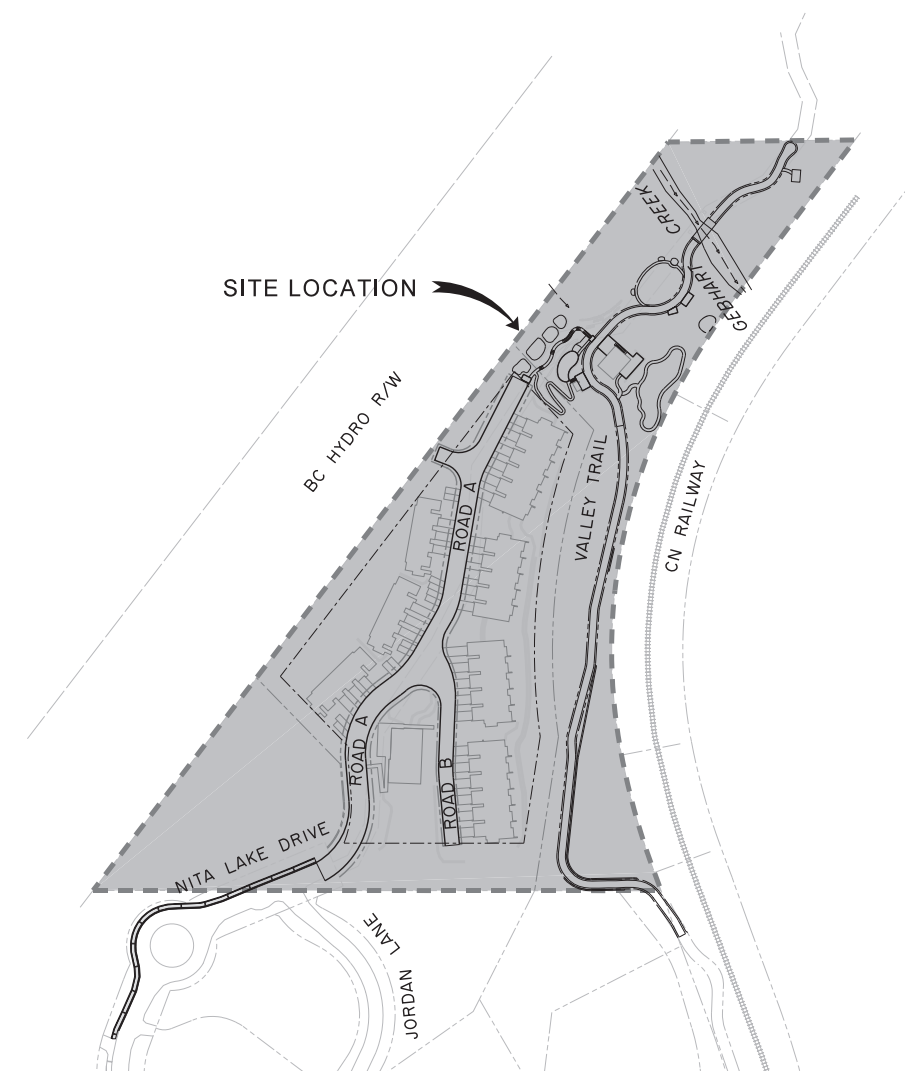
Contact: Jennifer Levitt, B.L.Arch

LANDSCAPE ARCHITECT

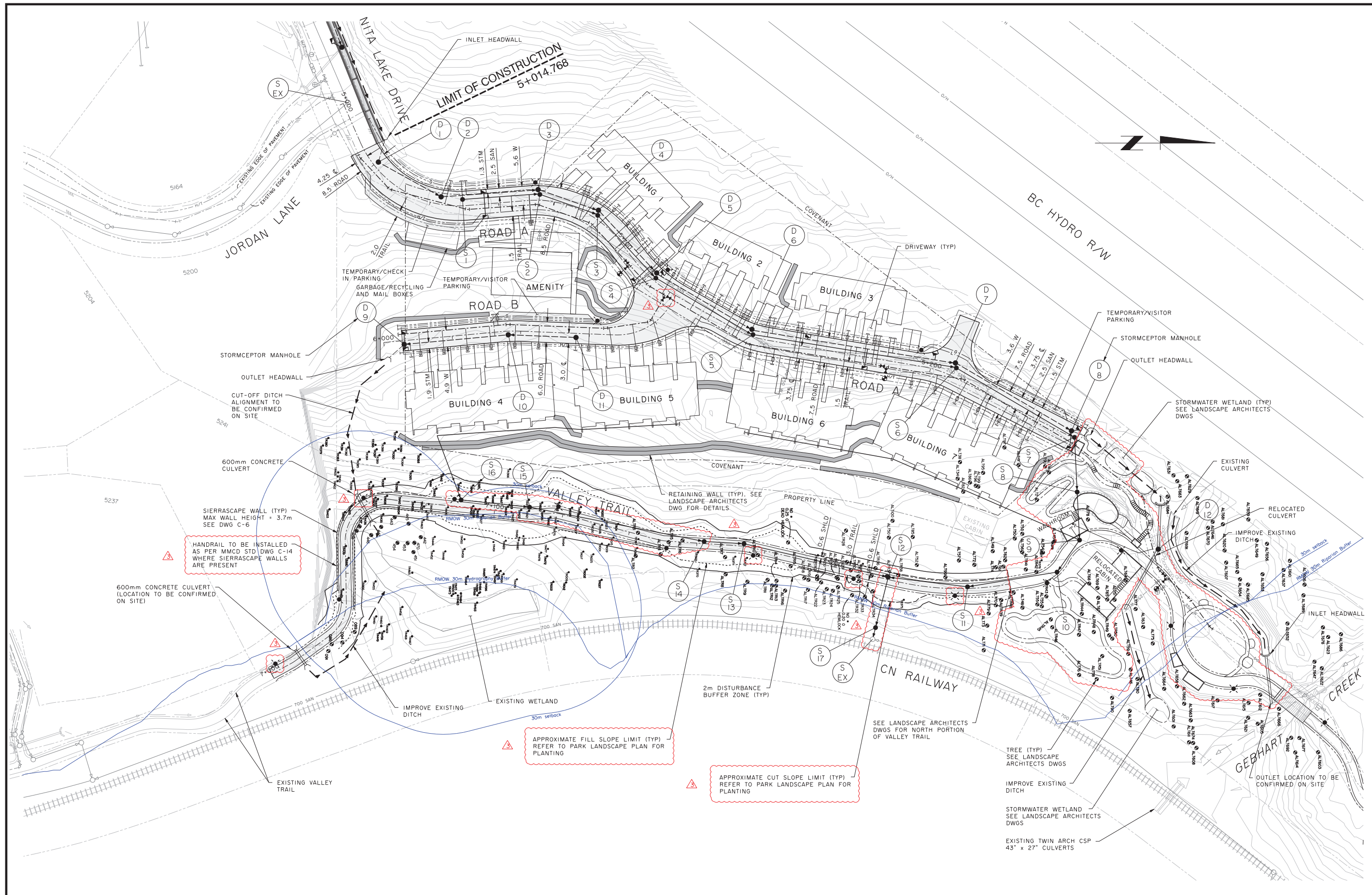
Tom Barratt Ltd. Landscape Architects
8605 Drieter Way
Whistler, B.C.
V8E 0G2

Phone: 604-932-3040
Cell: 250-802-9296

Contact: Alex van Zyl



SITE LOCATION PLAN
SCALE 1:5000



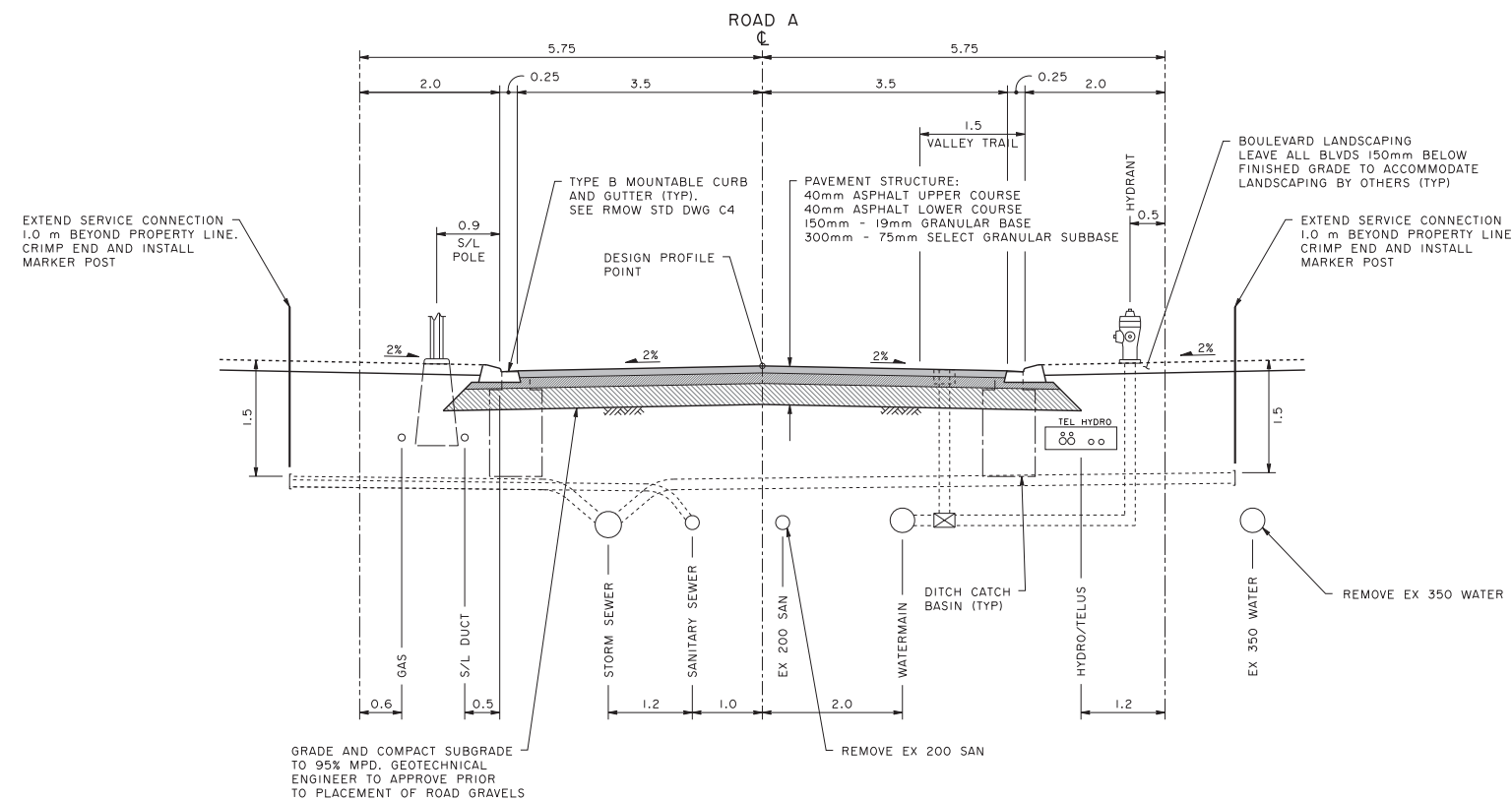
InterCAD
CONSULTING ENGINEERS

NO.	DATE	REVISIONS	BY	APPROVED
3	23-07-24	DEVELOPMENT PERMIT THIRD SUBMISSION		
2	23-03-31	DEVELOPMENT PERMIT RESUBMISSION		
1	22-09-02	DEVELOPMENT PERMIT SUBMISSION		

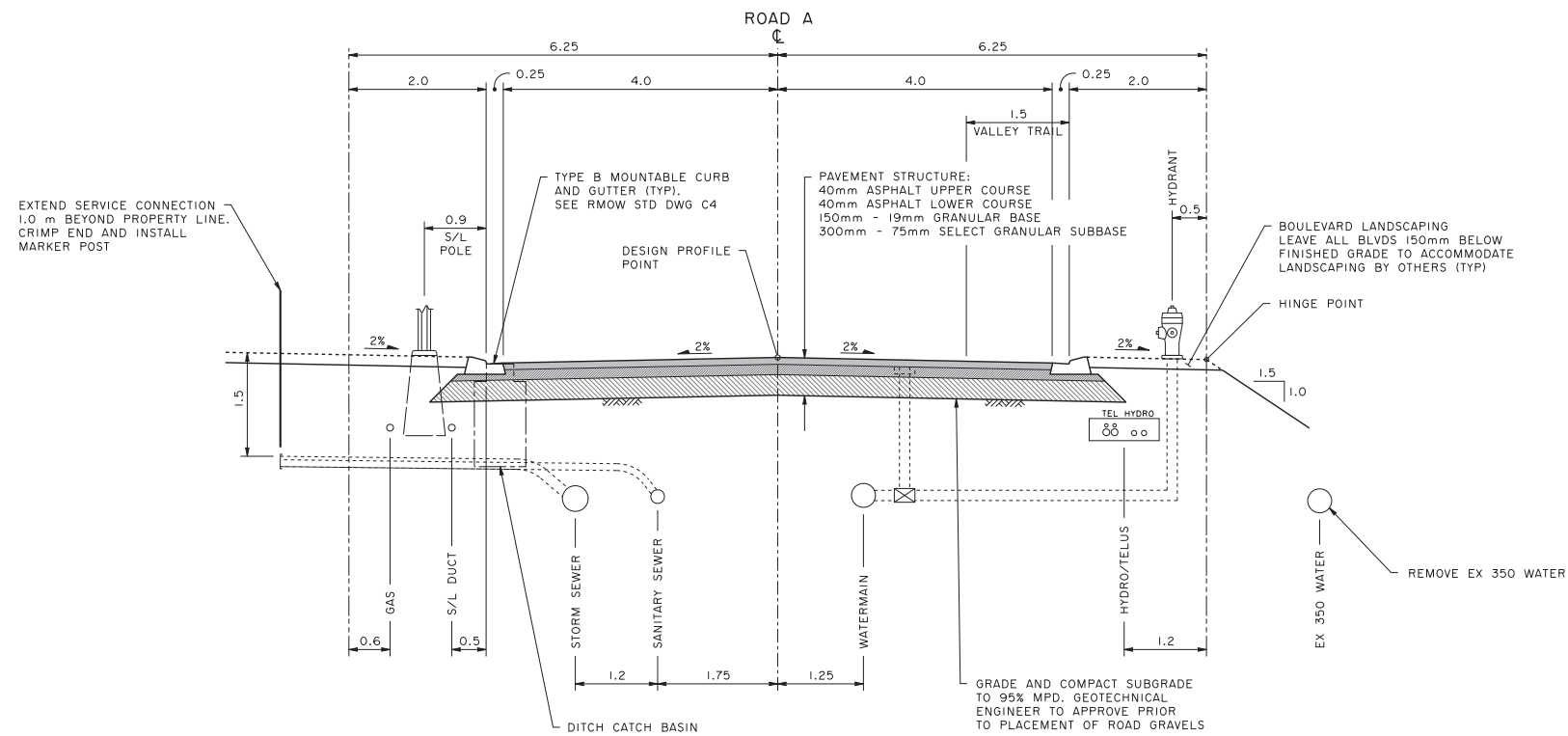
Client: **EMPIRE CLUB DEVELOPMENTS**
Project: **HILLMAN TOWN HOUSE SITE**

Scale: 1:500	
Design: IL	Drawn: LJ
Pier Date: 23/07/24	Pier Time: 2:15:02 PM

Title: **OVERALL SERVICING PLAN**
Drawing Number: **C-1**
Revision: **3**

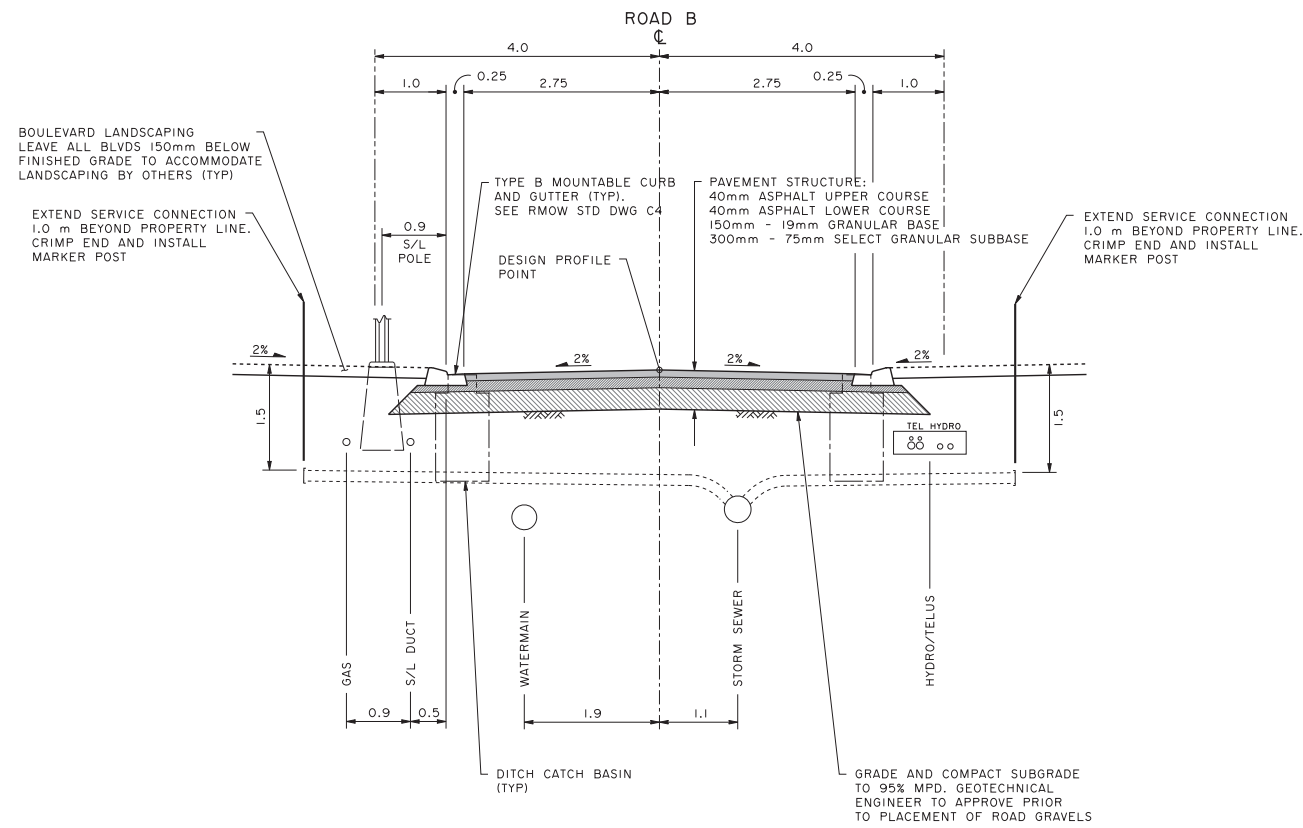


ROAD A 5+120 TO 5+210

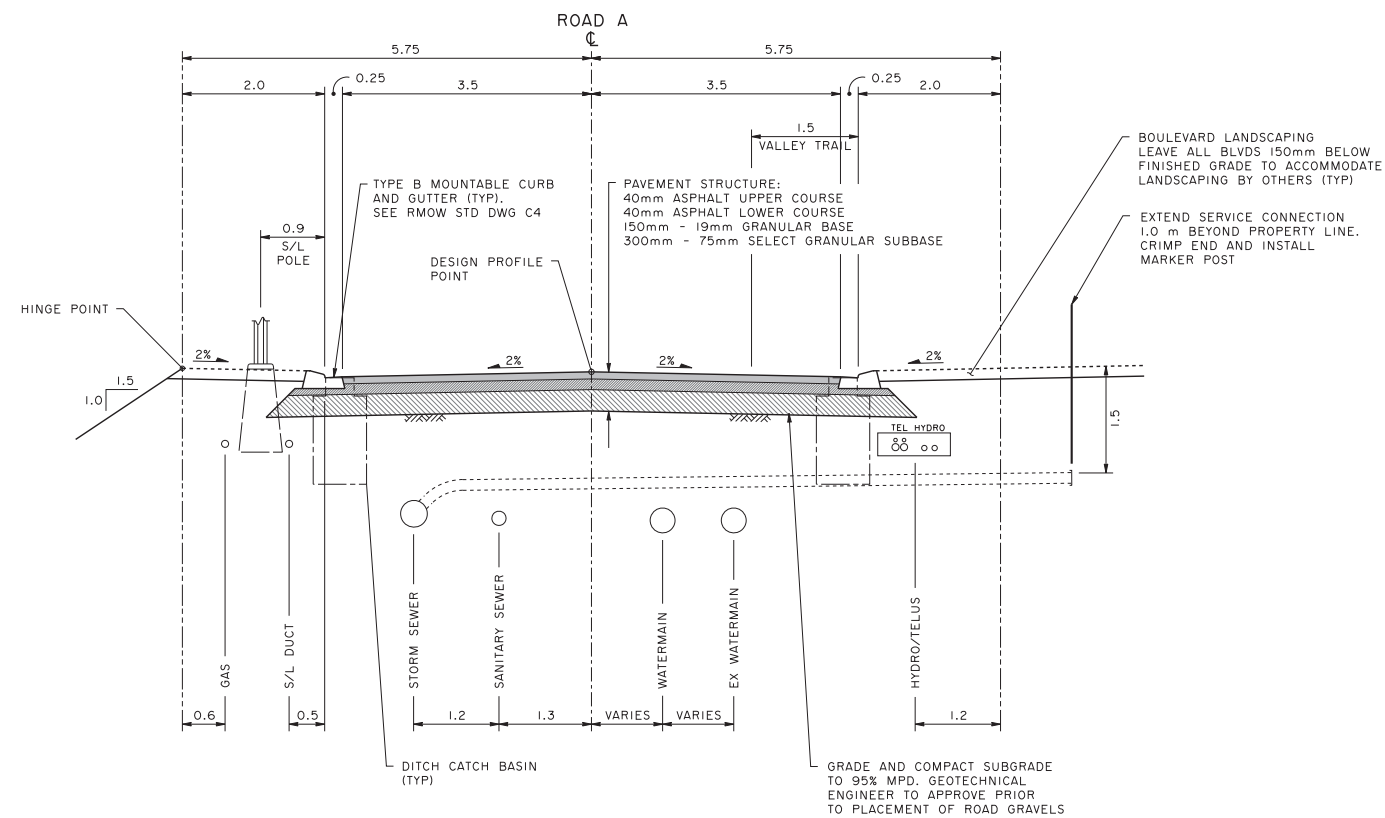


ROAD A 5+000 TO 5+120

NO.	DATE	REVISIONS	BY	APPROVED
3	23-07-24	DEVELOPMENT PERMIT THIRD SUBMISSION	JK	
2	23-03-31	DEVELOPMENT PERMIT RESUBMISSION	JK	
1	22-09-02	DEVELOPMENT PERMIT SUBMISSION	JK	

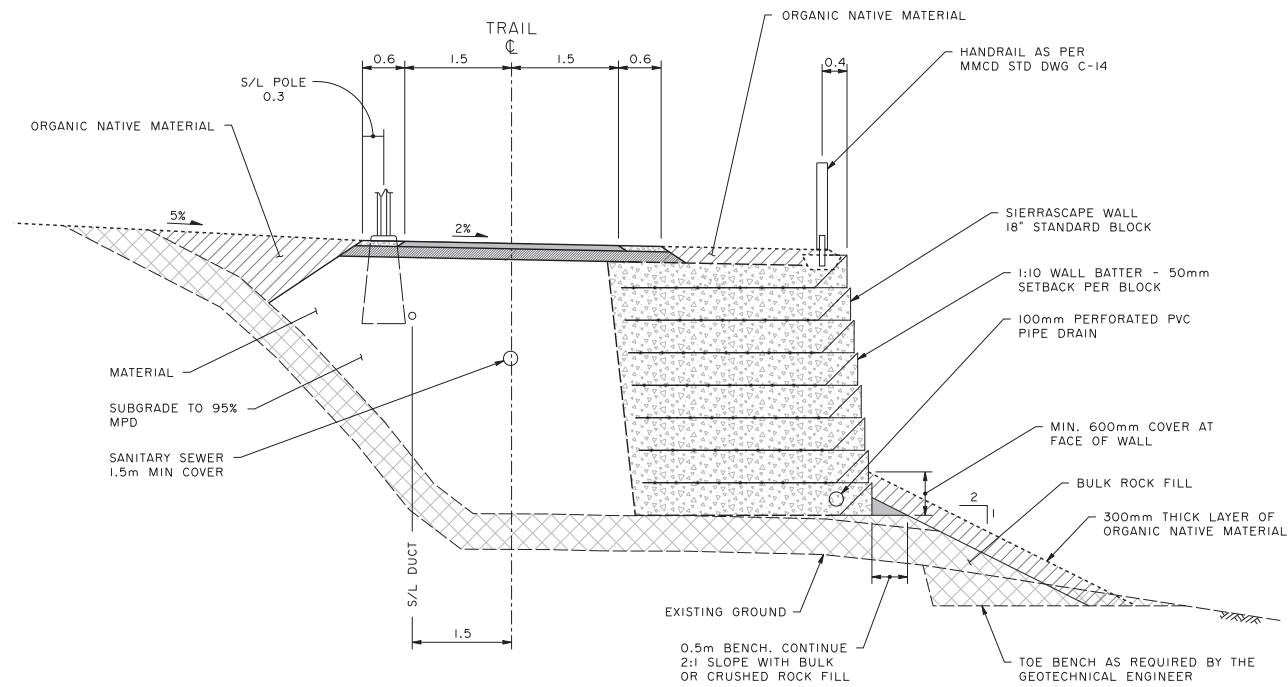


ROAD B 6+000 TO 6+085

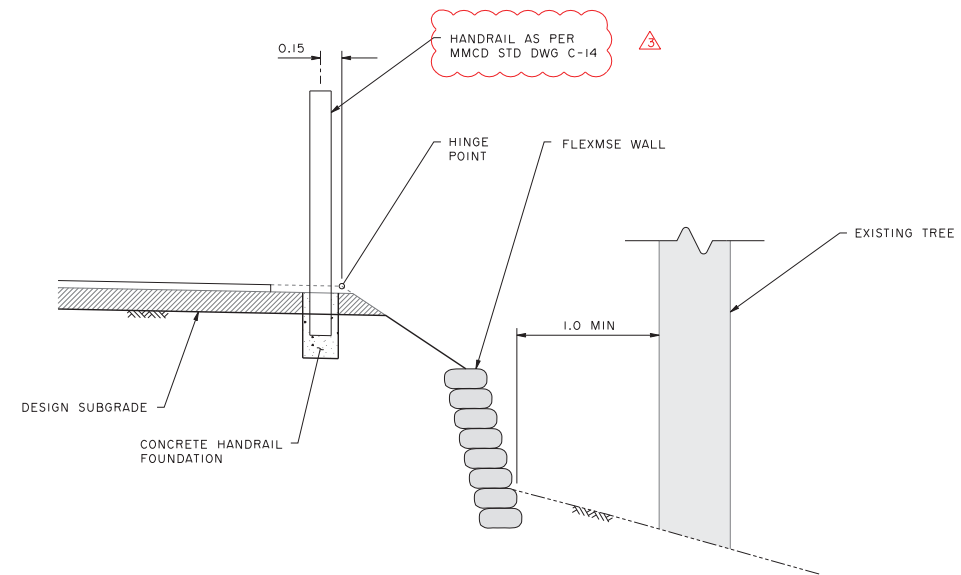


ROAD A 5+210 TO 5+247

NO.	DATE	REVISIONS	BY	APPROVED
3	23-07-24	DEVELOPMENT PERMIT THIRD SUBMISSION	JK	
2	23-03-31	DEVELOPMENT PERMIT RESUBMISSION	JK	
1	22-09-02	DEVELOPMENT PERMIT SUBMISSION	JK	

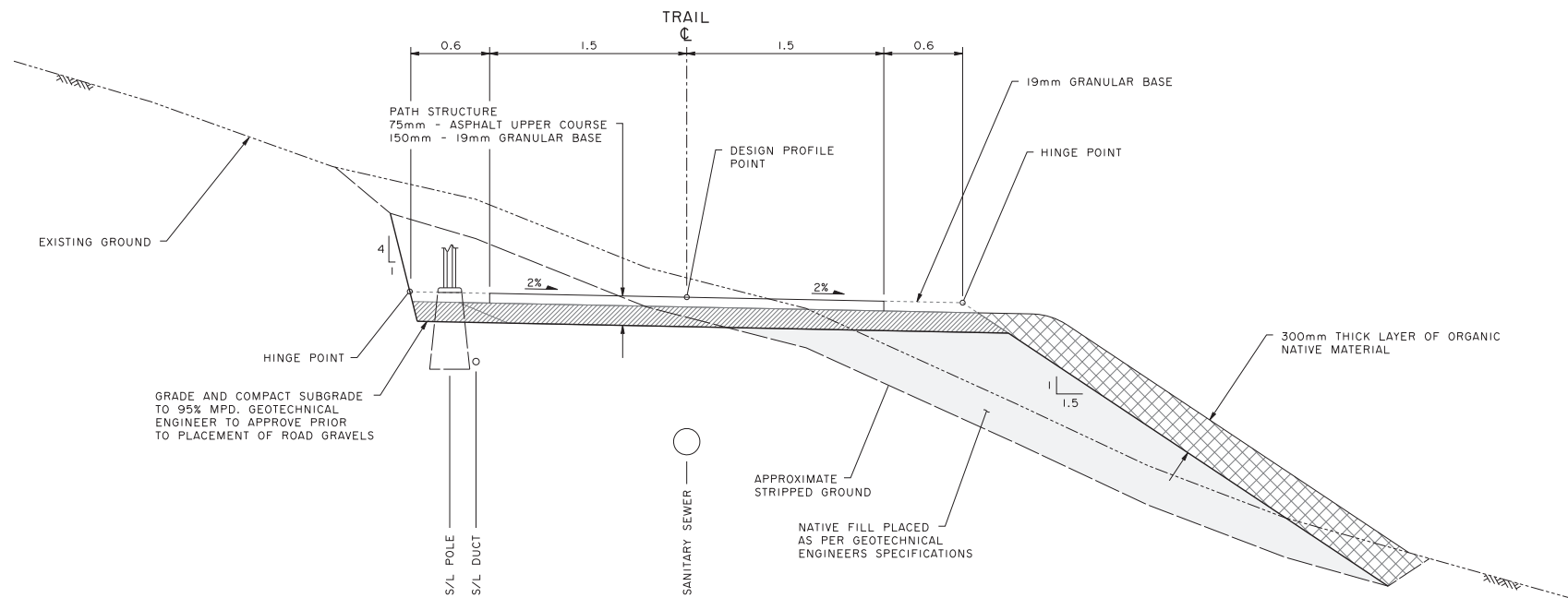


TYPICAL SECTION 2: SIERRASCAPE WALL
SCALE: 1:50



FLEXMSE WALL AT EXISTING TREE LOCATIONS
SCALE: 1:25

3



TYPICAL SECTION 1: CUT AND FILL SLOPES
SCALE 1:25

InterCAD
CONSULTING ENGINEERS

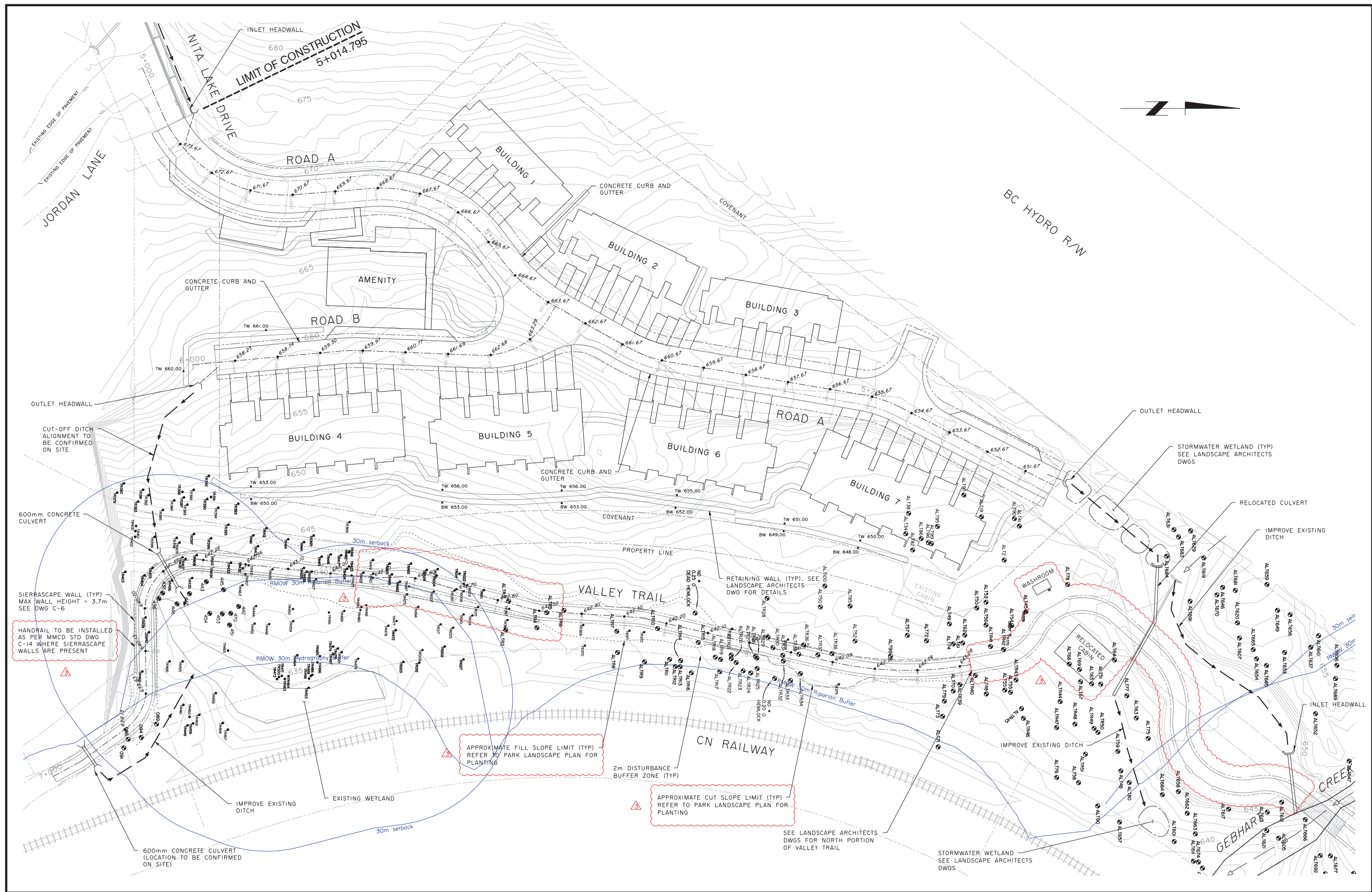
NO.	DATE	REVISIONS	BY	APPROVED
3	23-07-24	DEVELOPMENT PERMIT THIRD SUBMISSION		
2	23-03-31	DEVELOPMENT PERMIT RESUBMISSION		
1	22-09-02	DEVELOPMENT PERMIT SUBMISSION		

Client: **EMPIRE CLUB DEVELOPMENTS**
Project: **HILLMAN TOWN HOUSE SITE**

Scale: 0 5 10 15 1:25	
Design: IL	Drawn: LJ
Pier Date: 23/07/24	Pier Time: 2:04:47 PM

Title: **TYPICAL SECTIONS**
VALLEY TRAIL

Drawing Number: **C-6** Revision: **3**



NO.	DATE	REVISIONS	BY	APPROVED
3	23-07-24	DEVELOPMENT PERMIT THIRD SUBMISSION		IL
2	23-03-31	DEVELOPMENT PERMIT RESUBMISSION		IL
1	22-09-02	DEVELOPMENT PERMIT SUBMISSION		IL

Client: **EMPIRE CLUB DEVELOPMENTS**
Project: **HILLMAN TOWN HOUSE SITE**

Scale: 1:400	
Design: IL	Drawn: LJ
Pier Date: 23/07/24	Pier Time: 2:28:58 PM

Title: **GRADING PLAN**
Drawing Number: **C-7**
Revision: **3**

LEGEND

- SERVICE CONNECTION
- STORM SEWER
- MANHOLE
- CUT-OFF DITCH
- DIRECTION OF FLOW FOR SURFACE RUNOFF
- DEVELOPMENT BOUNDARY
- SUBCATCHMENT BOUNDARY
- GROUND CONTOUR
- CATCHMENT AREA ID
- CATCHMENT AREA (ha)
- DISCHARGE POINT ID
- VEGETATED AREA (C = 0.3)
- SEEDED LAWN (C = 0.3)
- WETLAND/CREEK HWM
- HARD SURFACE (C = 0.9)

FLOW TO SUBCATCHMENTS (10 YEAR EVENT)			
CATCHMENT	PRE-DEVELOPMENT (cms)	POST-DEVELOPMENT (cms)	DISCHARGE POINT
A1	3.91	3.98	1
A2	3.92	3.98	2
A3	0.25	0.20	3
A4	0.32	0.32	4
A5	0.03	0.03	5
A6	0.04	0.04	6



InterCAD
CONSULTING ENGINEERS

NO.	DATE	REVISIONS	BY	APPROVED
2	23-07-24	DEVELOPMENT PERMIT THIRD SUBMISSION		IL
1	23-03-31	DEVELOPMENT PERMIT RESUBMISSION		IL

Client: **EMPIRE CLUB DEVELOPMENTS**
Project: **HILLMAN TOWN HOUSE SITE**

Scale: 1:750
Design: IL
Drawn: LJ
Plot Date: 23/07/24
Plot Time: 2:17:10 PM

Title: **STORMWATER MANAGEMENT PLAN**
Drawing Number: **C-8**
Revision: **2**