

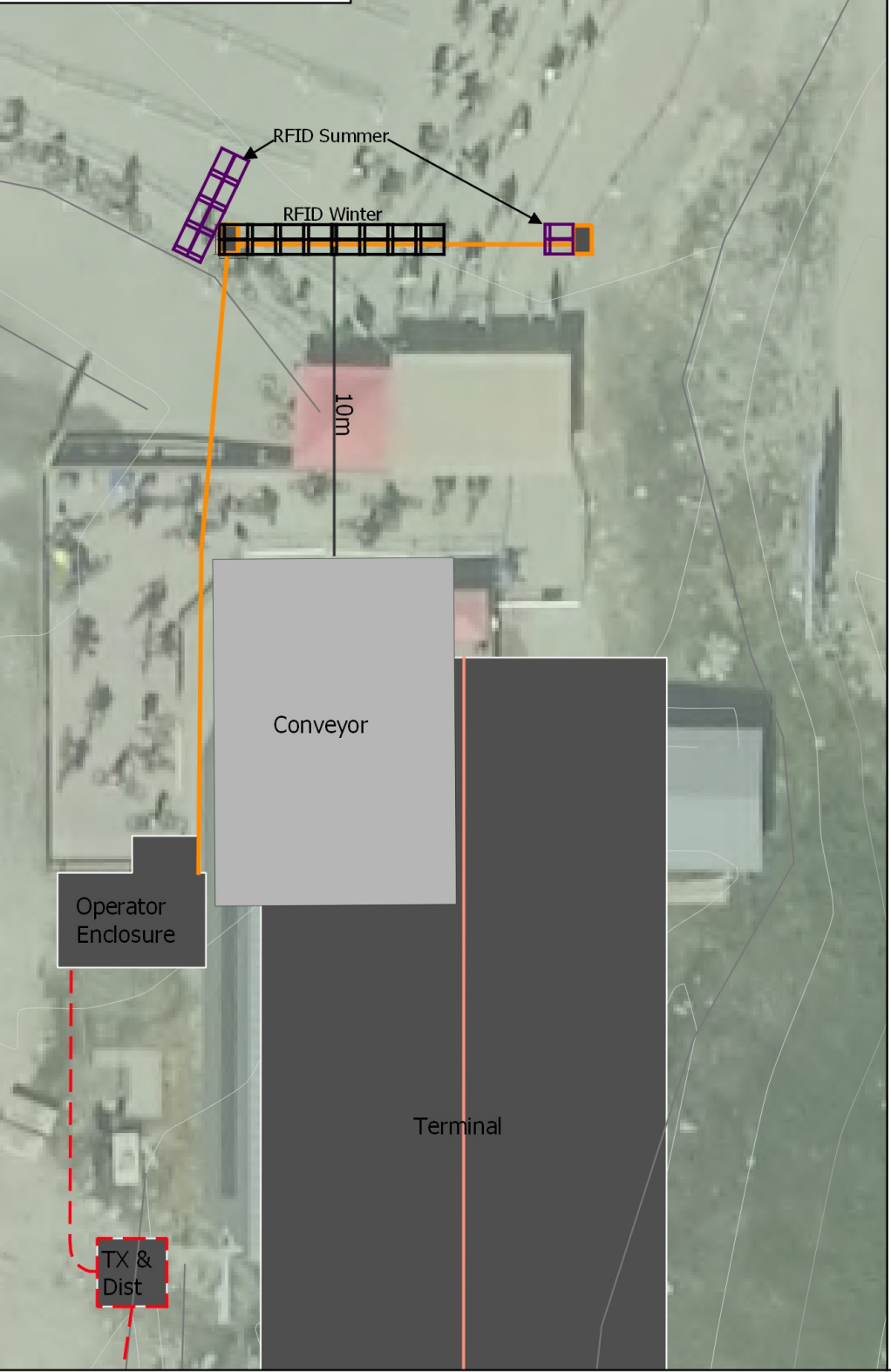
Figure 1

- New Electrical
- Existing Electrical
- New Communication Cable



Figure 2

- Summer RFID Position
- Winter RFID Position



Notes:

Electrical:
Electrical support infrastructure will include the installation of a new high voltage radial from the WB Tower 5 Switch site to the base terminal and a new transformer and distribution (Fig 1.)

Communication Cable:
New communication cable will be run out from the new Operator Enclosure to the RFID location.

RFID:
RFID will consist of 8 single pallet style gates (similar to the existing sytle at the base of Fitzsimmons) and align horizontally. Dimensions below in Fig 3. Eight gates aligned horizontally will be utilized for the Winter Season and 4 gates aligned horizontally with one additional single gate will be utilized during the Summer Operation (Fig 2). The Pallet style has been selected to allow for versatility in placement to ensure the best utilization of space and a positive guest experience.

Additional Infratructure:
Drainage infrastructure is outlined in the terminal grading plan to be delivered.

Figure 3

