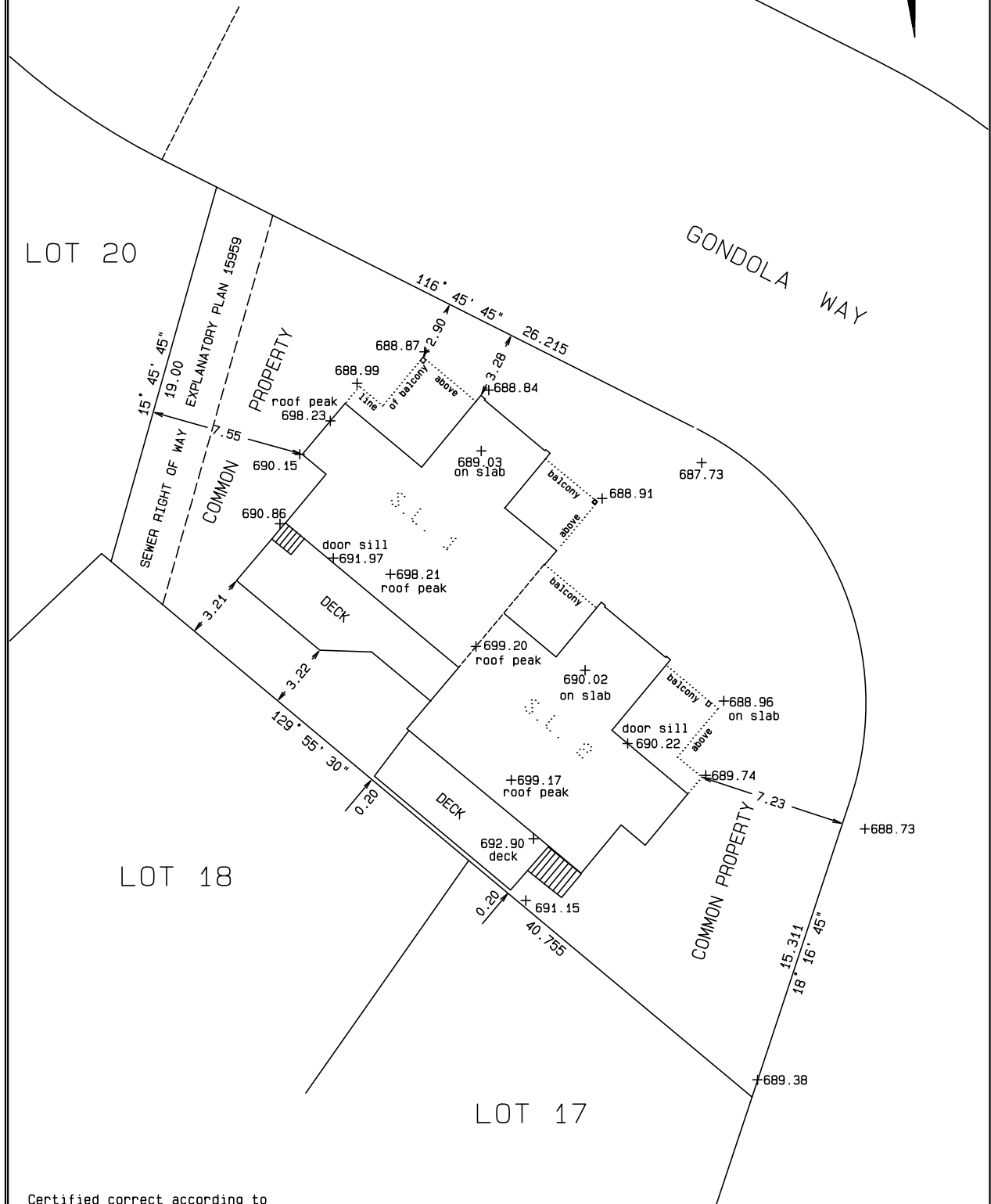
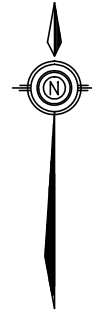


B.C. LAND SURVEYOR'S SITE PLAN OF BUILDING ON  
 STRATA PLAN VR1731, DISTRICT LOT 4749,  
 GROUP 1, NEW WESTMINSTER DISTRICT.  
 2229/2231 Gondola Way, Whistler, B.C..

Distances shown are in metres  
 and are derived from Plan VR1731

SCALE : 1 : 200



Certified correct according to  
 conditions as noted:

Paul Bunbury  
 8CNFUU  
Digitally signed by Paul Bunbury 8CNFUU  
 DN: cn=CA, c=Paul Bunbury 8CNFUU, o=BC  
 Land Surveyors, ou=Verity ID #  
 www.juricert.com/UAUP.cfm?id=8CNFUU  
 Date: 2020.05.20 15:29:59 -0700

B.C.L.S.

May 21, 2020

JOB# FILE 2020-020 DATA FILE 20-02003.DAT

ELEVATIONS ARE IN METRES AND ARE REFERRED  
 TO RESORT MUNICIPALITY OF WHISTLER  
 SANITARY SEWER ASBUILT DRAWING -S2027  
 USED INVERT ELEVATION OF MH12 683.90m

BUNBURY & ASSOCIATES  
 PROFESSIONAL B.C. LAND SURVEYORS,  
 SQUAMISH & WHISTLER, BC www.bunbury-surveys.com  
 No.204-1085 MILLAR CREEK ROAD, WHISTLER, B.C., 604-932-3770

B-0061