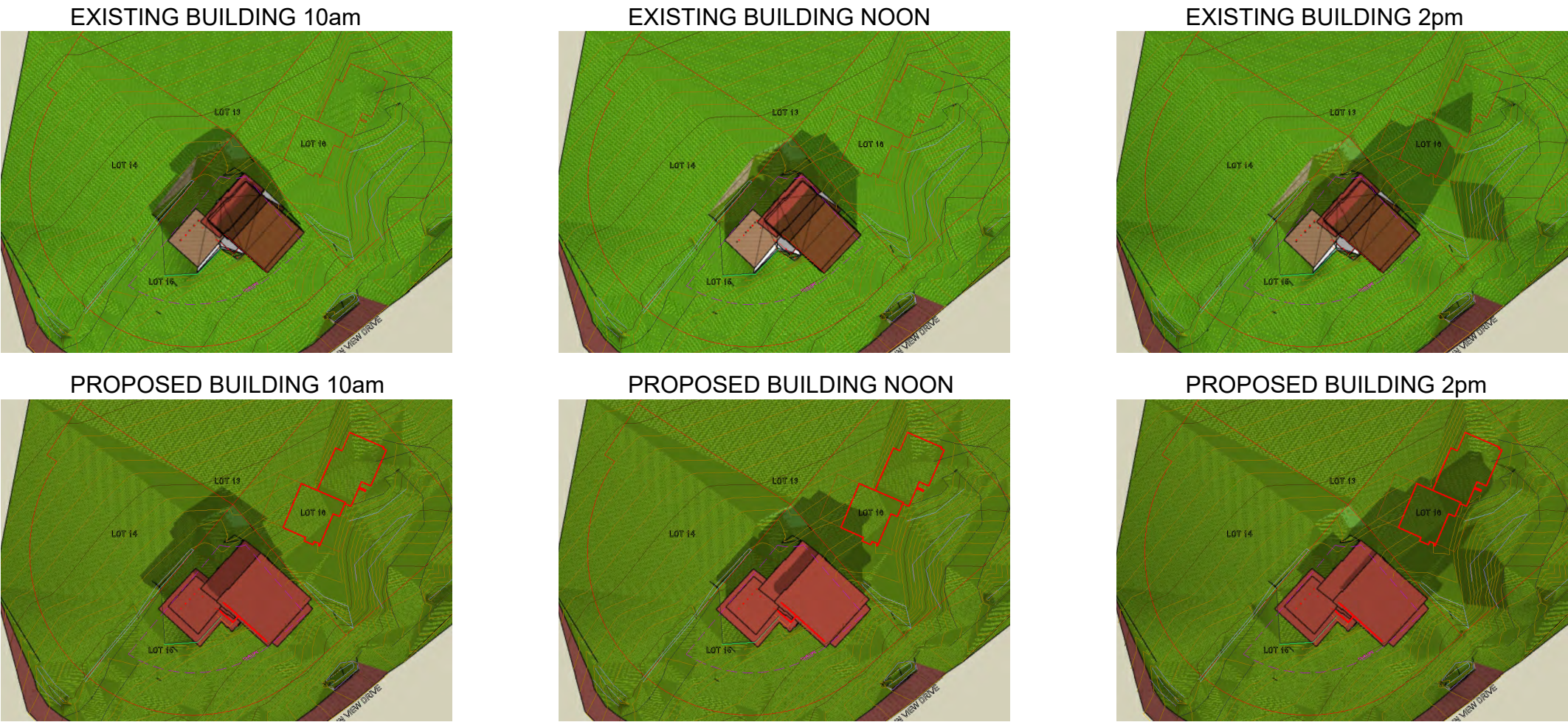
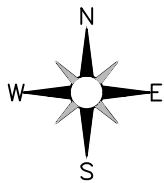


PLAN SHOWING SHADE COMPARISON FOR BUILDING SITUATED UPON LOT 15, D.L. 7301, GP. 1, N.W.D., PLAN 15206

DECEMBER 21st WINTER SOLSTICE



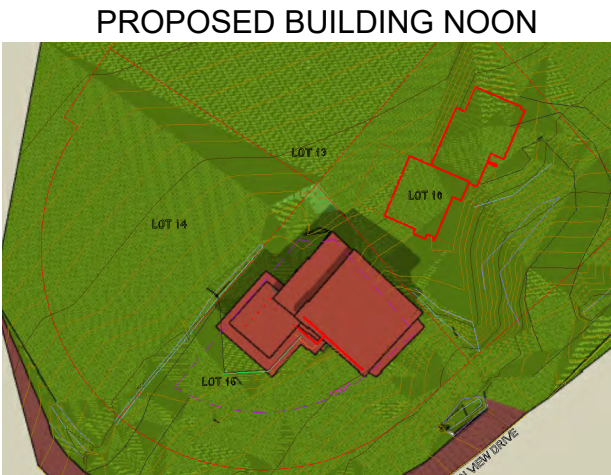
- NOTE:
- EXISTING BUILDING MODELED USING DBSS FOUNDATION SURVEY SEPTEMBER 7 2021 AND APPROXIMATE ELEVATIONS AND ROOF LINE SCALED FROM ARCHITECTS PLANS RECEIVED AUGUST 30 2021
 - BUILDING ON LOT 16 TAKEN FROM SURVEY COMPLETED IN THE YEAR 2000 FOR REFERENCE ONLY AND DOES NOT REPRESENT CURRENT CONDITIONS
 - SURFACE BUILT FROM SURVEY ON LOT 15 OCTOBER 7th 2008 AND SURVEY ON LOT 16 COMPLETED IN THE YEAR 2000 AND MAY NOT REPRESENT CURRENT CONDITIONS
 - SHADOWS DO NOT TAKE INTO ACCOUNT OTHER BUILDINGS INCLUDING THE BUILDING ON LOT 16, EXISTING TREES OR ANY VEGETATION OR MOUNTAINS BLOCKING SUNLIGHT



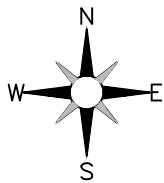
<div>RESORT MUNICIPALITY OF WHISTLER</div> <div><div><div>201002040</div><div></div></div><div>GRAPHIC SCALE METRES 1 : 1000</div><div>All distances are in metres</div></div>	<div>Client:</div> <div>ROBIN HAYTON</div>	<div>Revision:</div>	<div>© 2022 Doug Bush Survey Services Ltd.</div> <div>All Rights Reserved,</div> <div>No reproductions or distribution permitted.</div> <div>No responsibility accepted for unauthorized use.</div>		
	<div>Project:</div> <div>8315 MOUNTAINVIEW DRIVE</div>				
<div>DOUG BUSH SURVEY SERVICES Ltd.</div> <div>Applied Science Technologists in Geomatics</div> <div>Unit 18, 1370 Alpha Lake Road, Whistler, B.C. V8E 0H9</div> <div>Phone 604-932-3314 www.dbss.ca</div> <div>E-mail: Stu.Pinkney@dbss.ca</div> <div>E-mail: Ian.Stirk@dbss.ca</div>	<div>Notes:</div> <ul style="list-style-type: none">WHISTLER WINTER SOLSTICE - OFFICIAL SUNRISE 08:09am - SUNSET 04:11pmTHE SUN SETS BEHIND THE MOUNTAIN AT APPROXIMATELY 2:30pm	<div>Certified Correct.</div> <div><div><div>Ian Stirk ASCT, RSIS</div><div>Applied Science Technologist (Geomatics)</div></div><div>This 14th day of February 2022</div></div>	<div>Date:</div> <div>February 14, 2022</div>	<div>SCALE: 1:1000</div>	
			<div>Files:</div> <div>07172.CRD</div>	<div>JOB NO.: J22025</div>	
				<div>DWG.: 22019B-1</div> <div>SHEET: 1</div>	

PLAN SHOWING SHADE COMPARISON FOR BUILDING SITUATED UPON LOT 15, D.L. 7301, GP. 1, N.W.D., PLAN 15206

MARCH 20th SPRING EQUINOX



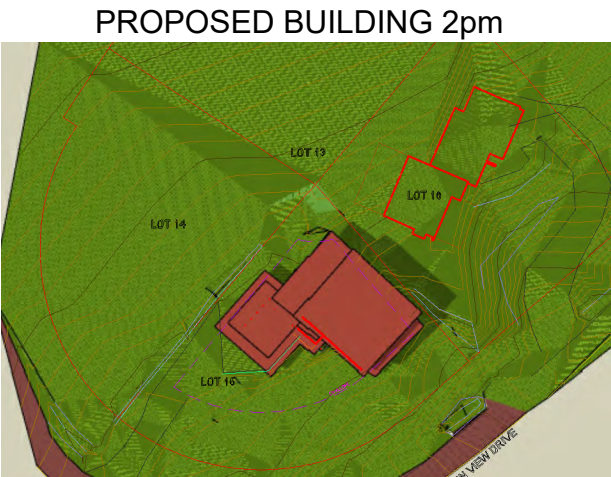
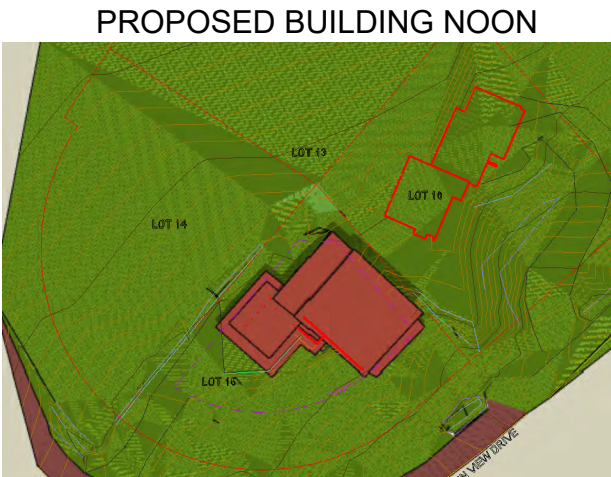
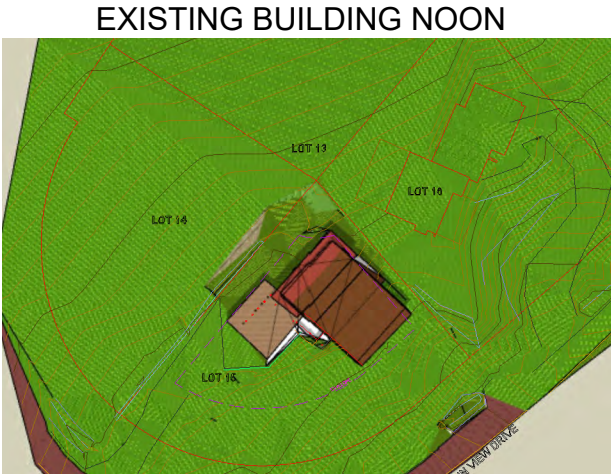
- NOTE:
- EXISTING BUILDING MODELED USING DBSS FOUNDATION SURVEY SEPTEMBER 7 2021 AND APPROXIMATE ELEVATIONS AND ROOF LINE SCALED FROM ARCHITECTS PLANS RECEIVED AUGUST 30 2021
 - BUILDING ON LOT 16 TAKEN FROM SURVEY COMPLETED IN THE YEAR 2000 FOR REFERENCE ONLY AND DOES NOT REPRESENT CURRENT CONDITIONS
 - SURFACE BUILT FROM SURVEY ON LOT 15 OCTOBER 7th 2008 AND SURVEY ON LOT 16 COMPLETED IN THE YEAR 2000 AND MAY NOT REPRESENT CURRENT CONDITIONS
 - SHADOWS DO NOT TAKE INTO ACCOUNT OTHER BUILDINGS INCLUDING THE BUILDING ON LOT 16, EXISTING TREES OR ANY VEGETATION OR MOUNTAINS BLOCKING SUNLIGHT



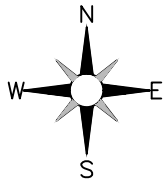
<p>RESORT MUNICIPALITY OF WHISTLER</p> <p>20 10 0 20 40</p> <p>GRAPHIC SCALE METRES 1 : 1000</p> <p>All distances are in metres</p>	<p>Client:</p> <p>ROBIN HAYTON</p>	<p>Revision:</p>	<p>© 2022 Doug Bush Survey Services Ltd.</p> <p>All Rights Reserved.</p> <p>No reproductions or distribution permitted.</p> <p>No responsibility accepted for unauthorized use.</p>		
	<p>Project:</p> <p>8315 MOUNTAINVIEW DRIVE</p>		<p>Date:</p> <p>February 14, 2022</p> <p>Files:</p> <p>07172.CRD</p>		
<p>DOUG BUSH SURVEY SERVICES Ltd.</p> <p>Applied Science Technologists in Geomatics</p> <p>Unit 18, 1370 Alpha Lake Road, Whistler, B.C. V8E 0H9</p> <p>Phone 604-932-3314 www.dbss.ca</p> <p>E-mail: Stu Pinkney stu@dbss.ca</p> <p>E-mail: Ian Stirk ian@dbss.ca</p>	<p>Notes:</p> <ul style="list-style-type: none">WHISTLER SPRING EQUINOX - OFFICIAL SUNRISE 07:15am - SUNSET 07:24pmTHE SUN SETS BEHIND THE MOUNTAIN AT APPROXIMATELY 4:00pm	<p>Certified Correct.</p> <p>_____ Ian Stirk ASCT, RSIS Applied Science Technologist (Geomatics)</p> <p>This 14th day of February 2022</p>	<p>SCALE: 1:1000</p> <p>JOB NO.: J22025</p> <p>DWG.: 22019B-1</p> <p>SHEET: 2</p>		

PLAN SHOWING SHADE COMPARISON FOR BUILDING SITUATED UPON LOT 15, D.L. 7301, GP. 1, N.W.D., PLAN 15206

JUNE 21st SUMMER SOLSTICE



- NOTE:
- EXISTING BUILDING MODELED USING DBSS FOUNDATION SURVEY SEPTEMBER 7 2021 AND APPROXIMATE ELEVATIONS AND ROOF LINE SCALED FROM ARCHITECTS PLANS RECEIVED AUGUST 30 2021
 - BUILDING ON LOT 16 TAKEN FROM SURVEY COMPLETED IN THE YEAR 2000 FOR REFERENCE ONLY AND DOES NOT REPRESENT CURRENT CONDITIONS
 - SURFACE BUILT FROM SURVEY ON LOT 15 OCTOBER 7th 2008 AND SURVEY ON LOT 16 COMPLETED IN THE YEAR 2000 AND MAY NOT REPRESENT CURRENT CONDITIONS
 - SHADOWS DO NOT TAKE INTO ACCOUNT OTHER BUILDINGS INCLUDING THE BUILDING ON LOT 16, EXISTING TREES OR ANY VEGETATION OR MOUNTAINS BLOCKING SUNLIGHT



<div>RESORT MUNICIPALITY OF WHISTLER</div> <div><div><div>201002040</div><div></div></div><div>GRAPHIC SCALE METRES 1 : 1000</div><div>All distances are in metres</div></div>	<div>Client:</div> <div>ROBIN HAYTON</div>	<div>Revision:</div>	<div>© 2022 Doug Bush Survey Services Ltd.</div> <div>All Rights Reserved.</div> <div>No reproductions or distribution permitted.</div> <div>No responsibility accepted for unauthorized use.</div>		
	<div>Project:</div> <div>8315 MOUNTAINVIEW DRIVE</div>				
<div>DOUG BUSH SURVEY SERVICES Ltd.</div> <div>Applied Science Technologists in Geomatics</div> <div>Unit 18, 1370 Alpha Lake Road, Whistler, B.C. V8E 0H9</div> <div>Phone 604-932-3314 www.dbss.ca</div> <div>E-mail: Stu Pinkney stu@dbss.ca</div> <div>E-mail: Ian Stirk ian@dbss.ca</div>	<div>Notes:</div> <div><div><div>•</div><div>WHISTLER SUMMER SOLSTICE - OFFICIAL SUNRISE 05:03am - SUNSET 09:24pm</div></div><div><div>•</div><div>THE SUN SETS BEHIND THE MOUNTAIN AT APPROXIMATELY 5:30pm</div></div></div>	<div>Certified Correct.</div> <div><div><div>Ian Stirk ASCT, RSIS</div><div>Applied Science Technologist (Geomatics)</div></div><div>This 14th day of February 2022</div></div>	<div>Date:</div> <div>February 14, 2022</div>	<div>SCALE: 1:1000</div>	
			<div>Files:</div> <div>07172.CRD</div>	<div>JOB NO.: J22025</div>	
				<div>DWG.: 22019B-1</div>	<div>SHEET:</div> <div>3</div>